



HAMPSHIRE
CULTURAL
TRUST

WHAT'S
ON

FOR FAMILIES SUMMER 2017



FIND OUT MORE AT:

www.hampshireculturaltrust.org.uk

Come along to one of our venues this summer for open air and under cover family friendly activities. Discover the recently refurbished Westbury Manor Museum in Fareham, explore the gardens at Basing House or experience the indoor and outdoor mazes at Milestones Museum in Basingstoke.

Whatever the weather there are lots of fun things going on inside and out.



15 JULY – 29 OCTOBER

MILESTONES MUSEUM, BASINGSTOKE

From the age of the dinosaurs, to Romans, Victorians and more, travel in time to solve our incredible indoor and outdoor time mazes. Your task is to heal time – or there will be dinosaurs roaming the streets of Milestones. Learn and have fun come rain or shine with this family maze adventure. Hands on activities, under 5s free and 20% off admission if you book online in advance.*

*Terms and conditions apply. See website for more details.

O U T O F E G Y P T

21 JULY – 29 OCTOBER

WESTBURY MANOR MUSEUM, FAREHAM

A family friendly display of genuine Ancient Egyptian artefacts, many brought back to Hampshire by local people. Discover how Ancient Egyptians treated their dead and see many of the objects placed in the tomb for the afterlife including scarabs and mummified animals, mummy masks and jewellery. There are lots of activities, games and puzzles to try. Write your name in hieroglyphics, count like an Egyptian, or hunt for creepy crawlies. Admission free, suggested donation £3.



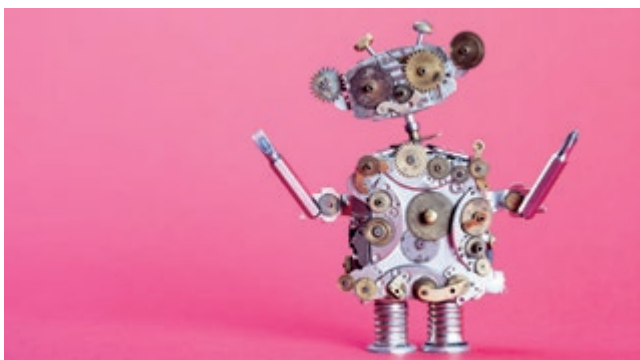


B A S I N G H O U S E

8 JULY – 3 SEPTEMBER

BASING HOUSE, BASINGSTOKE

Basing House is the perfect picnic venue for families with huge grounds and ruins to explore, a visitor centre, museum, Tudor garden and kids trail (you can even bring your dog!) Not to mention special events such as Tudor Tunnel Tuesday (during August), outdoor theatre and kids archaeological digs. Check out our website for more details, including 20% off standard admission on selected dates when the Great Barn can't be accessed.* *Terms and conditions apply.



G I Z M O B O T S

22 JULY – 2 SEPTEMBER

RED HOUSE MUSEUM & GARDENS,
CHRISTCHURCH

Gizmobots are found object robots that start life as finds from skips, second hand shops, car boot sales and scrap yards. Visit our family friendly exhibition and discover desirable quirky robots made from familiar home appliances and everyday objects. The exhibition is accessible for all ages and is accompanied by themed activities. Admission to the gardens and museum is free.

There's so much going on across the county this summer you won't want to miss out. Don't forget to check our website for times and dates at individual venues.

Highlights include:

**SEARCH, GOSPORT
27 JULY – 29 AUGUST**

Dressing up, science, history, literature and more. Fun family drop in events all summer long.

**ANDOVER MUSEUM &
MUSEUM OF THE IRON AGE
24 JULY – 1 SEPTEMBER**

Regular programme of family friendly craft days and trails with make-and-take activities and bookable workshops.

**BURSLEDON WINDMILL
27 JULY – 29 AUGUST**

There are plenty of things for families to do as you visit the windmill, garden and pond, plus special summer events throughout the holidays.

**ALDERSHOT MILITARY
MUSEUM**

24 JULY – 1 SEPTEMBER

Monkey crawl through our training tunnel and spot the objects around the galleries using activity sheets, plus extra family events.

**WESTGATE & CITY
MUSEUMS, WINCHESTER
24 JULY – 1 SEPTEMBER**

Summer schedule of family friendly trails with drop in make-and-take activities, dressing up fun and more.

**EASTLEIGH MUSEUM
27 JULY – 29 AUGUST**

Summer programme of activity days plus seasonal museum trail & family games to play.

DON'T MISS OUT!

**Find out more or join our mailing list at
www.hampshireculturaltrust.org.uk**



www.hampshireculturaltrust.org.uk



01962 678140



www.facebook.com/HampshireCulturalTrust



@HantsCulture



Hampshire
County Council



Winchester
City Council



Hampshire Cultural Trust manages 23 venues working in partnership with local authorities and communities in Hampshire and Dorset.

We are a registered charity (no. 1158583) and rely on charitable donations.

We hope you enjoy your visit, and please donate to help us give the past a future. To find out more, please visit: www.hampshireculturaltrust.org.uk

Details correct at time of going to press but subject to change.

giftaid it